


STAY AT HOME

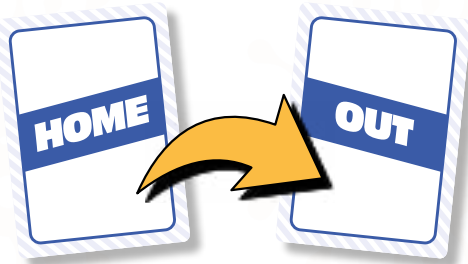


A card game that's nostalgic
for all the wrong reasons

HOW TO PLAY

THE GAME

This game is all about taking you back to a time you'd much rather forget. Trying to leave the house, scavenging for toilet roll, and of course getting COVID. The aim of the game, is to be the payer with most of their household out when the game is over. To leave the house, turn over one of your household cards from **HOME** to **OUT**.



The game is over when all cards from the draw pile have been used. In the event of a tie, the player with the most **STOCKPILE** cards wins. Remember, you cannot win with the COVID card in your hand...



The **ACTION**, **BLOCK**, **SEND HOME** and **GOVERNMENT ANNOUNCEMENTS** cards will all improve or diminish your chances of getting your household out, and winning the game. Use them tactically!

SET UP

Each player picks a coloured household, from the household cards and places all four in front of them with the **OUT** side down, and the **HOME** side facing them.



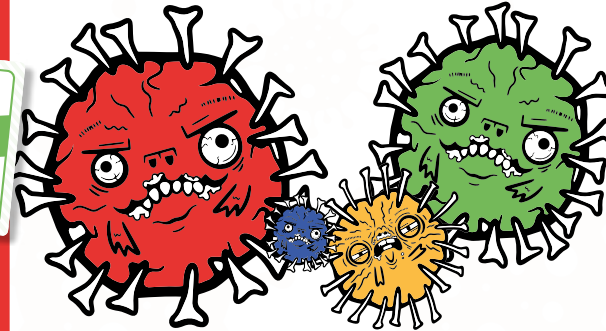
The rest of the deck is shuffled well and placed face down in the middle of the table, this is your draw pile. No cards are dealt. You build your hand by picking up a card from the draw pile on your turn.



It's only fair that the last player to have COVID goes first.

IN PLAY

On your turn you can either decide to play cards in your hand or, end your turn. To end your turn you must pick up a card from the draw pile. (Note: Unless you have an action card like **SKIP** or you have the **COVID** card.)



You can play as many cards, and in as many combinations as you like on your turn. Once played these must go into the discard pile in the middle of the table. Players can have up to ten cards in their hand at one time. (Note: **BLOCK** cards and some **ACTION** cards can be played when it isn't your turn).

The play will continue clockwise with each player picking up a card on their turn until the draw pile is finished and there are no cards left. Once finished, the player with most of their household turned to **OUT**, wins. (Remember: In the event of a tie break, the player with the most **STOCKPILE** cards wins. You cannot win with **COVID** in your hand.)

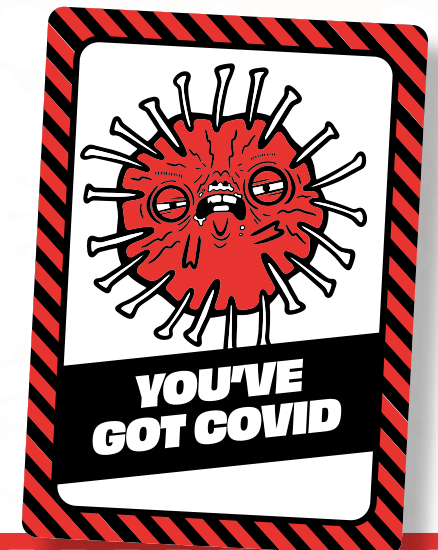
2 PLAYER VARIATION

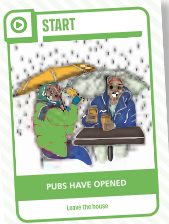
If you finish the game with one of each **STOCKPILE** cards (eggs, toilet roll, pasta and flour) you can win even if you end with the **COVID** card in your hand.



COVID CARD

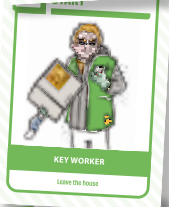
If the **COVID** card is picked up, it must be held in a players hand until it's their turn again, this is their isolation period. On their turn, they can only place the **COVID** card back into the draw pile, they must not pick up. Once this is done, that's their turn over. (Note: The **COVID** card can be placed back in draw pile anywhere a player chooses. Yes, even on the top..) **BLOCK COVID** and **GIVE COVID TO ANOTHER PLAYER** will stop you getting Covid.





START CARDS (GREEN)

When this card is drawn you can start a member of your household. You start them by turning one of your **HOME** in front of you, to **OUT**.



START AND PICK AGAIN

Repeat as above, but also pick up another card from the draw pile.



START WITH ANOTHER HOUSEHOLD (GREEN)

Repeat as you would with a normal start card, but also pick another player in the game to start with you. They also turn one of their **HOME** cards to **OUT**. These cards must be drawn, read out and placed into the discard pile. Do not include them in your hand.

GOVERNMENT ANNOUNCEMENTS (BLUE)

When this card is drawn, read it aloud to all players and carry out the action on the bottom of the card. Once read, place it into the discard pile. Do not include these cards in your hand.



ONE FROM EACH HOUSEHOLD LEAVE THE HOUSE

All players within the game turn one of their households from **HOME** to **OUT**. Note: Remember players with the **COVID** card, cannot start.



ALL HOUSEHOLDS PASS A CARD TO THE LEFT

All households pass a card of their choosing from their hand to the left.



ALL HOUSEHOLDS PASS A CARD TO THEIR RIGHT

As above, but pass to the right rather than left.



PICK A HOUSEHOLD TO SEND HOME

Choose another player to send one of their household home. They must turn one of their household from **OUT** to **HOME**.



ALL HOUSEHOLDS GIVE YOU ONE CARD EACH

All players in the game must give you a card of their choosing from their hand.



SEND ONE OF YOUR HOUSEHOLD HOME

You must turn one of your household cards from **OUT** to **HOME**.



ALL HOUSEHOLDS SEND ONE HOME

All players must turn one of their household cards from **OUT** to **HOME**.



PICK UP AN EXTRA CARD

The player who picked up and read this government announcement must pick up one extra card from the draw pile.



REVERSE THE DIRECTION OF PLAY

The direction of play must change from clockwise to anti-clockwise and vice versa.



PUT TWO OF YOUR CARDS BACK INTO THE PACK

The player who picked up and read out this card must place two cards from their hand back into the draw pile. Remember: If a player has an **IGNORE A GOVERNMENT ANNOUNCEMENT** card, they do not have to carry out the action on the government announcement cards.



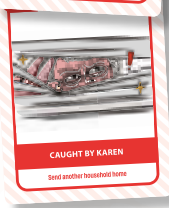
SEND HOME (RED)

When this card is drawn, you can send another player home. That player must turn one of their household cards from **OUT** to **HOME**.



GO HOME AND SEND ANOTHER HOUSEHOLD WITH YOU (RED)

If this is drawn you must turn one of your household cards from **OUT** to **HOME** but, you can tell another player to do the same. These cards must be drawn, read out and placed into the discard pile. Do not include them in your hand.



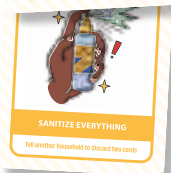
ACTION (ORANGE)

When one of these are drawn, do not read aloud. Add it to your hand to play when it's your turn again. These can be played at any time when it's your turn, unless you have the **COVID** card. When played, place it in the discard pile and pick up a card from the draw pile to end your turn.



SEE ANOTHER HOUSEHOLD'S HAND

When you play this card, you can ask to see another player's hand of your choosing.



TELL ANOTHER HOUSEHOLD TO DISCARD TWO CARDS

When played, you can force another household to discard two cards from their hand. These go back into the draw pile, anywhere the player discarding the cards chooses.



FORCE ANOTHER HOUSEHOLD TO MISS THEIR TURN

When played, pick a player to miss their next turn.



IGNORE A GOVERNMENT ANNOUNCEMENT

This is one of two action cards that can be played when it's not your turn. Play this card as soon as a government announcement is read by yourself or another player. You can then ignore the action from the announcement card.



SKIP YOUR OWN TURN

Play this card on your turn to skip picking up a card from the draw pile.



TAKE ANOTHER HOUSEHOLD'S CARD

When played, you get to take one card from another player's hand. You get to choose, but not see the card you're picking. Ask the player to fan the cards with the backs of the cards facing you and then pick one to add to your own hand.



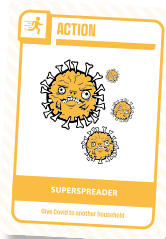
SWAP HANDS WITH ANOTHER PLAYER

Use this card to take another player's hand in exchange for yours. Note: Even if this card is the only card in your hand, you can take another player's and leave them with nothing.



TELL ANOTHER PLAYER TO PICK UP ONE CARD

By playing this, you can force another player to pick up one card from the draw pile. They must carry this out even if it isn't their turn.



GIVE COVID TO ANOTHER PLAYER

This is the second of the two cards that can be played when it isn't your turn. If you pick up the **COVID** card, you can give it straight to another player by playing this card. Remember: when played, place the action card into the discard pile. Don't give it to the other player with the **COVID** card.

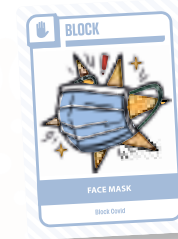


STOCKPILE

When these are drawn, add them to your hand. They cannot be played or actioned but may help you win the game in the event of a tie break.

BLOCK (LIGHT BLUE)

When one of these are drawn, do not read aloud. Add it to your hand to play when it's your turn again. These can be played at any time when it's your turn, unless you have the **COVID** card. When played, place it in the discard pile and pick up a card from the draw pile to end your turn.



BLOCK COVID

This can be played as soon as you pick up the **COVID** card. When played, discard the **BLOCK** card and place the **COVID** card back into the draw pile wherever you choose.



BLOCK A HOUSEHOLD LEAVING THE HOUSE

Play this card when another player picks up a start card. This stops them from turning one of the households from **HOME** to **OUT**.



REVERSE A HOUSEHOLD'S ACTION CARD

This can be played when another household plays an action card against you. It reverses the action and is

played against them instead. Example: If another household plays the **TAKE ANOTHER HOUSEHOLD'S CARD** and you countered with this block, you can take a card from the player who used the action against you. If the player doesn't have any cards to take, then the card acts as a block and cancels their action card.